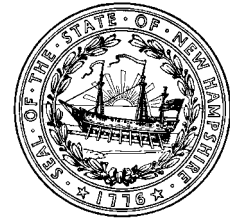


NH Department of Health and Human Services
129 Pleasant Street - State Office Park South
Concord, NH 03301



PRESS RELEASE
FOR IMMEDIATE RELEASE
January 4, 2021

CONTACT
State Joint Information Center
603-223-6169
jic@dos.nh.gov

NH DHHS COVID-19 Update – January 4, 2021

Concord, NH – The New Hampshire Department of Health and Human Services (DHHS) has issued the following update on the new coronavirus, COVID-19.

On Monday, January 4, 2021, DHHS announced 879 new positive test results for COVID-19, for a current PCR test positivity rate of 10.5%. Today's results include 516 people who tested positive by PCR test and 363 who tested positive by antigen test. There are now 6,200 current COVID-19 cases diagnosed in New Hampshire. Of the results reported today:

- **12/29:** 136 new cases today, for an updated total of **980** cases
- **1/1:** 1 new case today, for an updated total of **634** cases
- **1/2:** 417 new cases today, for an updated total of **579** cases
- **1/3:** **325** new cases

Test results for previous days are still being processed and the total number of new positives for those days are not yet complete. Updated case counts for prior days will be reflected on the [COVID-19 interactive dashboard](#).

Several cases are still under investigation. Additional information from ongoing investigations will be incorporated into future COVID-19 updates. Of those with complete information, there are one hundred and thirty-two individuals under the age of 18 and the rest are adults with 49% being female and 51% being male. The new cases reside in Rockingham (198), Hillsborough County other than Manchester and Nashua (151), Strafford (97), Merrimack (84), Cheshire (41), Belknap (25), Sullivan (24), Grafton (20), Carroll (11), and Coos (8) counties, and in the cities of Manchester (91) and Nashua (69). The county of residence is being determined for sixty new cases.

Community-based transmission continues to occur in the State and has been identified in all counties. Of those with complete risk information, most of the cases are either associated with an outbreak setting or have had close contact with a person with a confirmed COVID-19 diagnosis.

DHHS has also announced one additional death related to COVID-19. We offer our sympathies to the family and friends.

- 1 female resident of Hillsborough County, 60 years of age and older

There are currently 319 individuals hospitalized with COVID-19. In New Hampshire since the start of the pandemic, there have been a total of 47,328 cases of COVID-19 diagnosed with 916 (2%) of those having been hospitalized.

Current Situation in New Hampshire

**New Hampshire 2019 Novel Coronavirus (COVID-19) Summary Report
(updated January 4, 2021, 9:00 AM)**

NH Persons with COVID-19	47,328
Recovered	40,347 (85%)
Deaths Attributed to COVID-19	781 (2%)
Total Current COVID-19 Cases	6,200
Persons Who Have Been Hospitalized for COVID-19	916 (2%)
Current Hospitalizations	319
Total Persons Tested at Selected Laboratories, Polymerase Chain Reaction (PCR) ₂	523,201
Total Persons Tested at Selected Laboratories, Antibody Laboratory Tests ₂	34,891
Persons with Specimens Submitted to NH PHL	63,852
Persons with Test Pending at NH PHL ₃	168

₁Includes specimens positive at any laboratory and those confirmed by CDC confirmatory testing.

₂Includes specimens tested at the NH Public Health Laboratories (PHL), LabCorp, Quest, Dartmouth-Hitchcock Medical Center, and those sent to CDC prior to NH PHL testing capacity.

₃Includes specimens received and awaiting testing at NH PHL. Does not include tests pending at commercial laboratories.

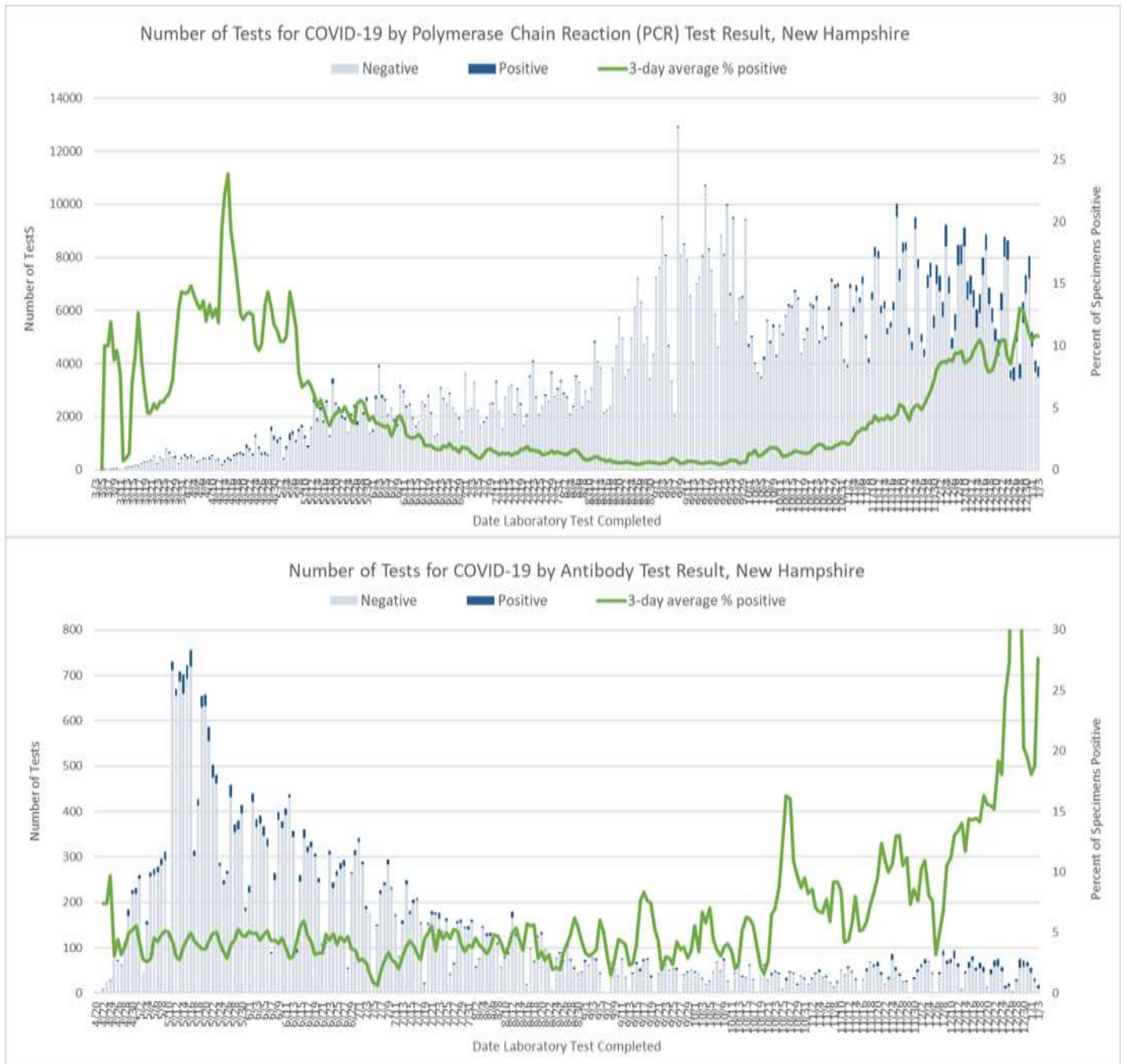
Number of Tests Conducted by Date of Report to NH DHHS

Polymerase Chain Reaction (PCR) Tests								
Testing Laboratory	12/28	12/29	12/30	12/31	1/01	1/02	1/03	Daily Average
NH Public Health Laboratories	413	575	748	1,273	0	895	315	603
LabCorp	997	1,554	966	1,858	1,294	1,252	1,047	1,281
Quest Diagnostics	431	576	557	1,101	861	528	909	709
Mako Medical	0	262	1,170	590	407	49	188	381
Dartmouth-Hitchcock Medical Center	295	859	714	854	654	403	417	599
Other NH Hospital Laboratory	446	624	644	416	401	252	236	431
Other Laboratory*	1,398	1,868	2,496	1,940	1,582	734	786	1,543
University of New Hampshire**	0	10	32	15	0	0	0	8
Total	3,980	6,328	7,327	8,047	5,199	4,113	3,898	5,556
Antibody Laboratory Tests								
Testing Laboratory	12/28	12/29	12/30	12/31	1/01	1/02	1/03	Daily Average
LabCorp	0	27	19	22	14	1	7	13
Quest Diagnostics	11	25	38	25	36	11	10	22
Dartmouth-Hitchcock Medical Center	6	12	7	12	0	1	0	5
Other Laboratory*	12	2	6	7	1	17	0	6
Total	29	66	70	66	51	30	17	47

* Includes out-of-state public health laboratories, out-of-state hospital laboratories, and other commercial laboratories not already listed in the table.

Note: Patients who had both antibody and polymerase chain reaction (PCR) tests are accounted for in both tables.

** Includes tests conducted at the UNH laboratory and their contracted lab Veritas.



[NH DHHS Daily Update on COVID-19 Archive](#)

For more information, please visit the DHHS COVID-19 webpage at <https://www.nh.gov/covid19>.

###